

From: [Deardoff, Amy](#)
To: [Robinson, Kelly](#)
Cc: [McWilliams, Katherine](#)
Subject: RE: Re:
Date: Monday, March 06, 2017 1:45:00 PM
Attachments: [ARG590001 As Built Engineering Plan Sheets 20130412.pdf](#)

I believe this is it. The last page shows the email in the attached Word document.

Amy Deardoff
P: 501-682-0650
F: 501-682-0880

From: Robinson, Kelly
Sent: Monday, March 06, 2017 1:41 PM
To: Deardoff, Amy
Subject: FW: Re:

Amy,

Do you know if we have the document that Mr Murdoch is requesting.

Kelly Robinson

Public Information Officer
5301 Northshore Drive
North Little Rock, AR 72118

501-682-0916

From: John Murdoch [<mailto:artzbarn@gmail.com>]
Sent: Monday, March 06, 2017 9:37 AM
To: Robinson, Kelly
Subject: Re:

Kelly,

Thank you. I have a last request. It was easier to cut and paste to explain from the last link you sent me.

Thank you,
John Murdoch

On Mon, Mar 6, 2017 at 9:20 AM, Robinson, Kelly <ROBINSON@adeq.state.ar.us> wrote:
Good morning, Mr. Murdoch.

I think this is what you are looking for.

https://www.adeq.state.ar.us/downloads/WebDatabases/PermitsOnline/NPDES/PermitInformation/ARG590001_As_Built_Engineering_Plan_Sheets_20130412.pdf

Trusting all is well with you.

Kelly Robinson

Public Information Officer
5301 Northshore Drive
North Little Rock, AR 72118

[501-682-0916](tel:501-682-0916)

From: J. Murdoch [mailto:jfmurdoch3@gmail.com]
Sent: Thursday, March 02, 2017 10:01 AM
To: Robinson, Kelly
Subject:

Kelly,

I was trying to locate the engineering drawings for the "AS BUILT" for the C&H Hog Farms site April 12, 2013. (ARG590001). I had a copy but can not find it on my drive or on the ADEQ website.

Could you send me a link or the file. I have the NOI and NMP file, but I would like to review the "As Built" copy which came out April 2013.

Thank you,
John Murdoch

C & H HOG FARMS GESTATION-FARROWING FARM AS BUILT ENGINEERING PLAN SHEETS

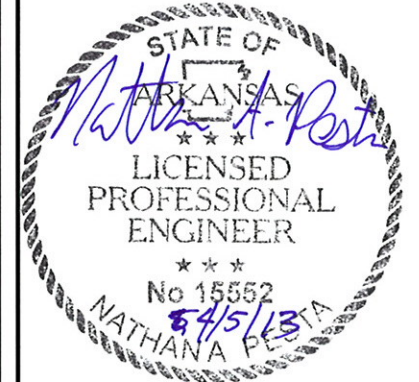
SECTION 26, T 15 N, R 20 W
NEWTON COUNTY, ARKANSAS

DATE: APRIL 12, 2013

SHEET INDEX

SHEET 7 -	WASTE STORAGE POND FINAL DESIGN
SHEET 8 -	PROPOSED SITE PLAN CROSS SECTION
SHEET 10 -	WASTE STORAGE POND & BARN CROSS SECTIONS
SHEET 11 -	WASTE STORAGE POND CROSS SECTIONS
SHEET 13 -	POND INLET & MAXIMUM BERM DETAILS
SHEET 14 -	WASTE STORAGE POND 1 STAGE STORAGE TABLE
SHEET 15 -	WASTE STORAGE POND 2 STAGE STORAGE TABLE

GENERAL NOTES



1	AS BUILT	4/12/13
No.	Revision/Issue	Date

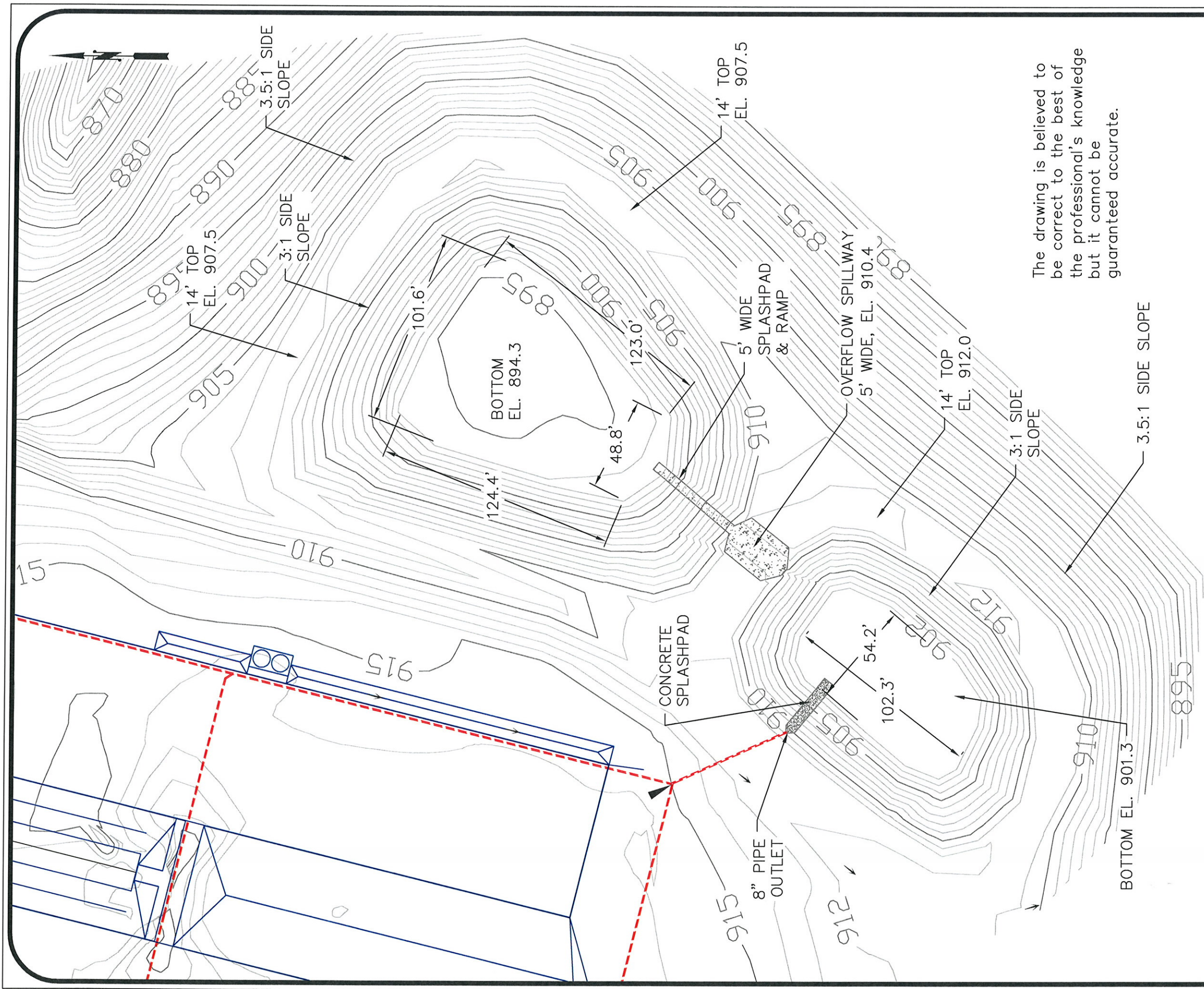
**DeHaan, Grabs
& Associates, LLC**
Consulting Engineers
PO Box 522, Mandan, ND 58554
(701) 663-1116, FAX: (701) 667-1356
www.dgaengineering.com

**C & H HOG FARMS
GESTATION-FARROWING FARM**

SECTION 26, T 15 N, R 20 W
NEWTON COUNTY, AR

COVER SHEET

DATE: JUN 1, 2012	SHEET: COVER
SCALE: NONE	
DRAWN BY: NAP	
CHECKED BY: DLD	



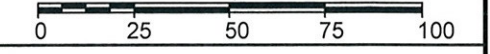
The drawing is believed to be correct to the best of the professional's knowledge but it cannot be guaranteed accurate.

GENERAL NOTES

LEGEND

- BENCHMARK
- BUILDINGS
- FENCELINE
- CULVERT/PIPE
- DRAINAGE ARROW

SCALE, FEET



1	As Built	4/1/13
No.	Revision/Issue	Date

DeHaan, Grabs & Associates, LLC
Consulting Engineers
PO Box 522, Mandan, ND 58554
(701) 663-1116, FAX: (701) 667-1356
www.dgaengineering.com

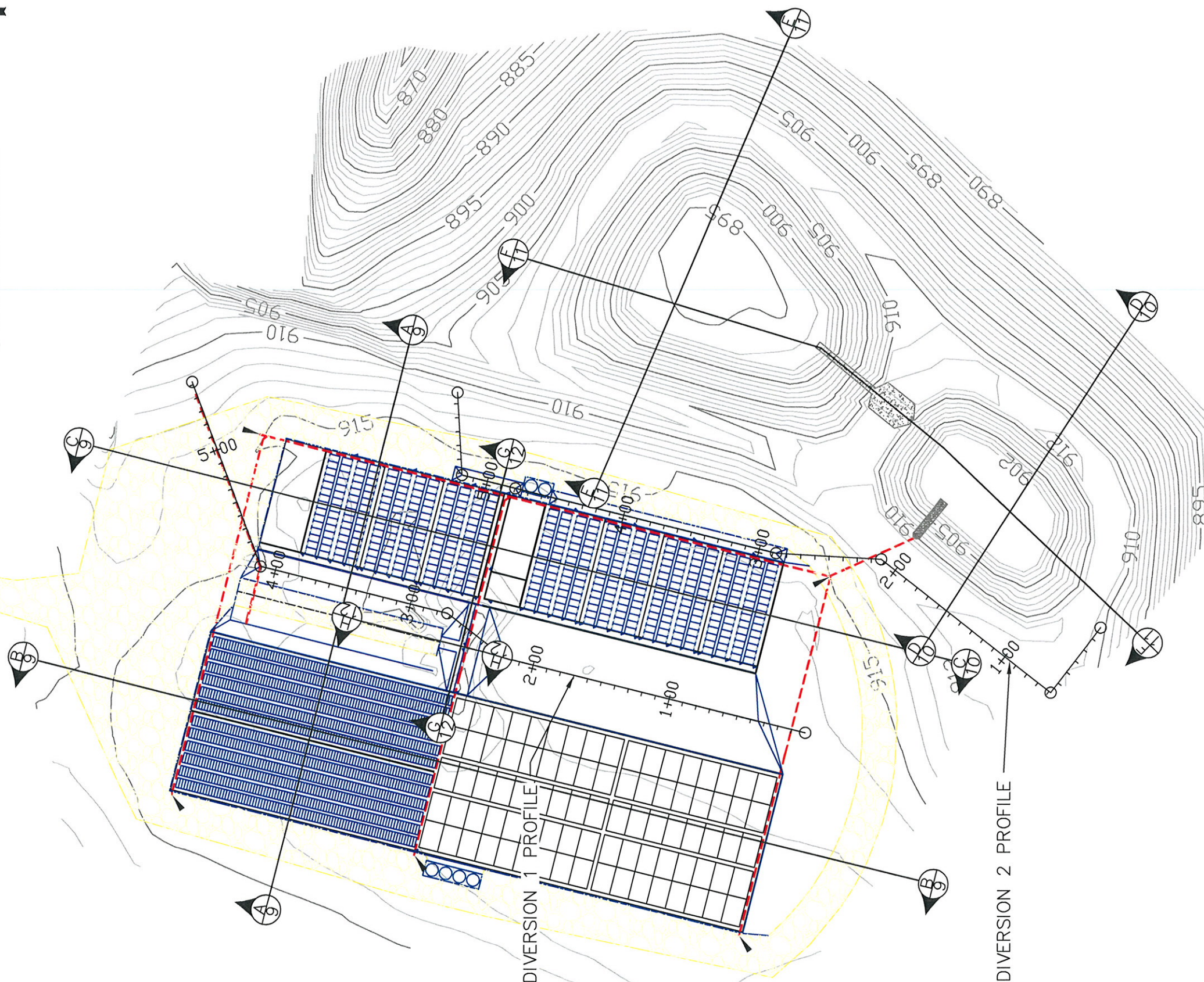
C & H HOG FARMS
GESTATION-FARROWING FARM

SECTION 26, T 15 N, R 20 W
NEWTON COUNTY, AR

**WASTE STORAGE POND
FINAL DESIGN**

DATE: APR 30, 2012	SHEET: 7
SCALE: 1" = 50'	
DRAWN BY: NAP	
CHECKED BY: DLD	

The drawing is believed to be correct to the best of the professional's knowledge but it cannot be guaranteed accurate.

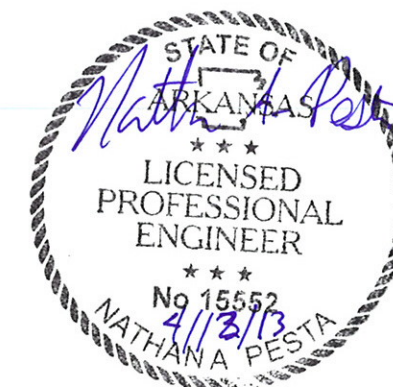


GENERAL NOTES

LEGEND

- ⊕ BENCHMARK
- BUILDINGS
- - - FENCELINE
- - - CULVERT/PIPE
- ← DRAINAGE ARROW

SCALE, FEET



1	As Built	4/1/13
No.	Revision/Issue	Date

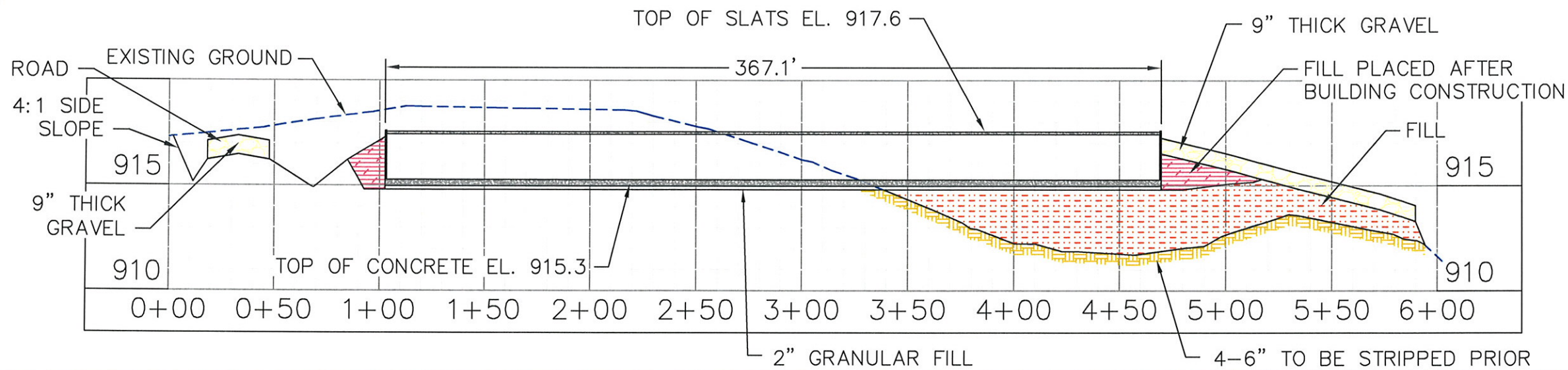
DeHaan, Grabs & Associates, LLC
Consulting Engineers
PO Box 522, Mandan, ND 58554
(701) 663-1116, FAX: (701) 667-1356
www.dgaengineering.com

C & H HOG FARMS
GESTATION-FARROWING FARM

SECTION 26, T 15 N, R 20 W
NEWTON COUNTY, AR

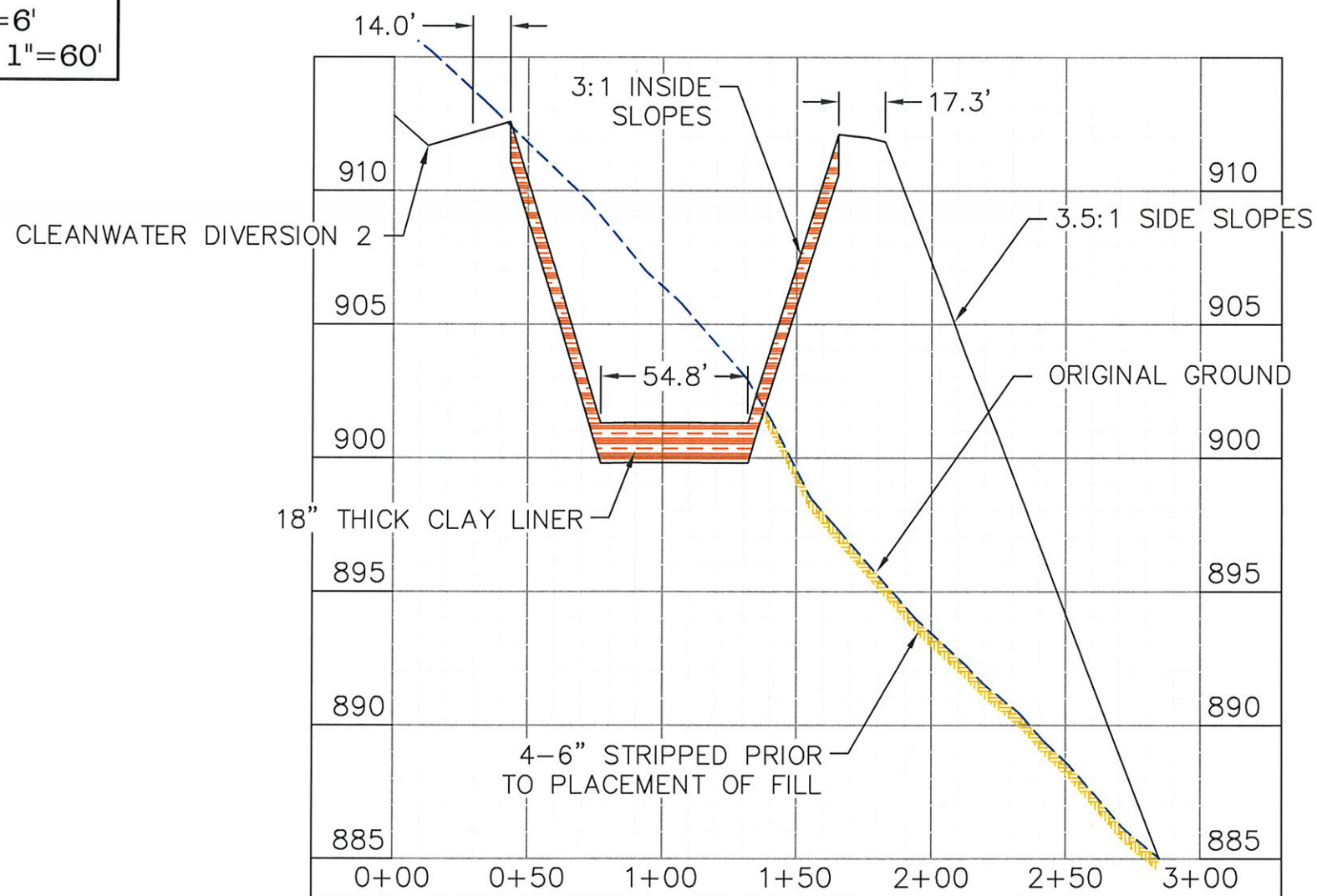
PROPOSED SITE PLAN
CROSS SECTIONS

DATE: APR 30, 2012	SHEET: 8
SCALE: 1" = 80'	
DRAWN BY: NAP	
CHECKED BY: DLD	

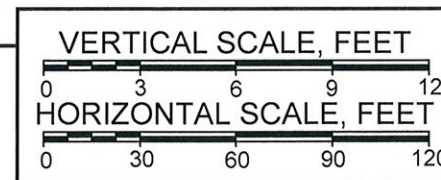


BARN CROSS SECTION

SCALE:
VERTICAL: 1"=6'
HORIZONTAL: 1"=60'



WASTE STORAGE POND 1 CROSS SECTION



The drawing is believed to be correct to the best of the professional's knowledge but it cannot be guaranteed accurate.

GENERAL NOTES

- GRAVEL
- FILL
- CONCRETE
- STRIPPING
- EXISTING GROUND

STATE OF ARKANSAS

LICENSED PROFESSIONAL ENGINEER

No. 15552

4/12/13

NATHANA PESTA

1	As Built	4/1/13
No.	Revision/Issue	Date

DeHaan, Grabs & Associates, LLC

Consulting Engineers

PO Box 522, Mandan, ND 58554

(701) 663-1116, FAX: (701) 667-1356

www.dgaengineering.com

C & H HOG FARMS

GESTATION-FARROWING FARM

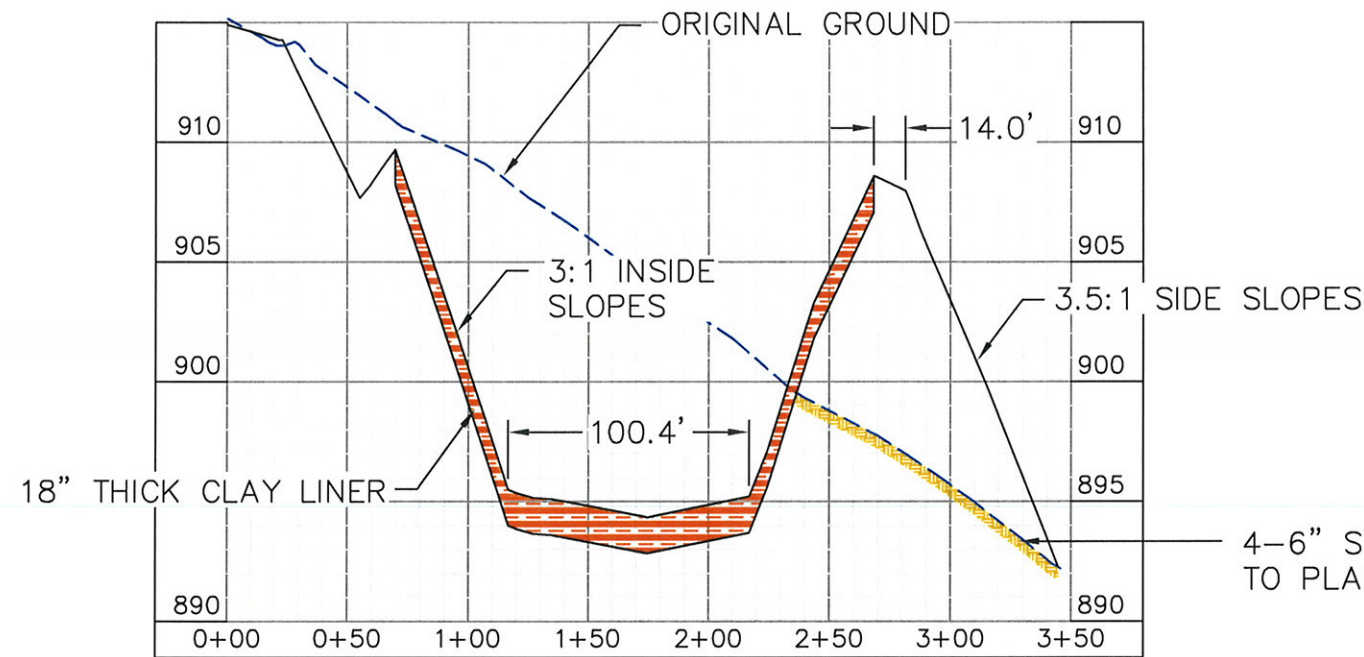
SECTION 26, T 15 N, R 20 W

NEWTON COUNTY, AR

WASTE STORAGE POND & BARN CROSS SECTIONS

DATE: APR 30, 2012	SHEET: 10
SCALE: AS SHOWN	
DRAWN BY: NAP	
CHECKED BY: DLD	

FILE NAME: OS PROJECT FILES/SWINE/HENSON/CFILES/PLAN



The drawing is believed to be correct to the best of the professional's knowledge but it cannot be guaranteed accurate.

GENERAL NOTES

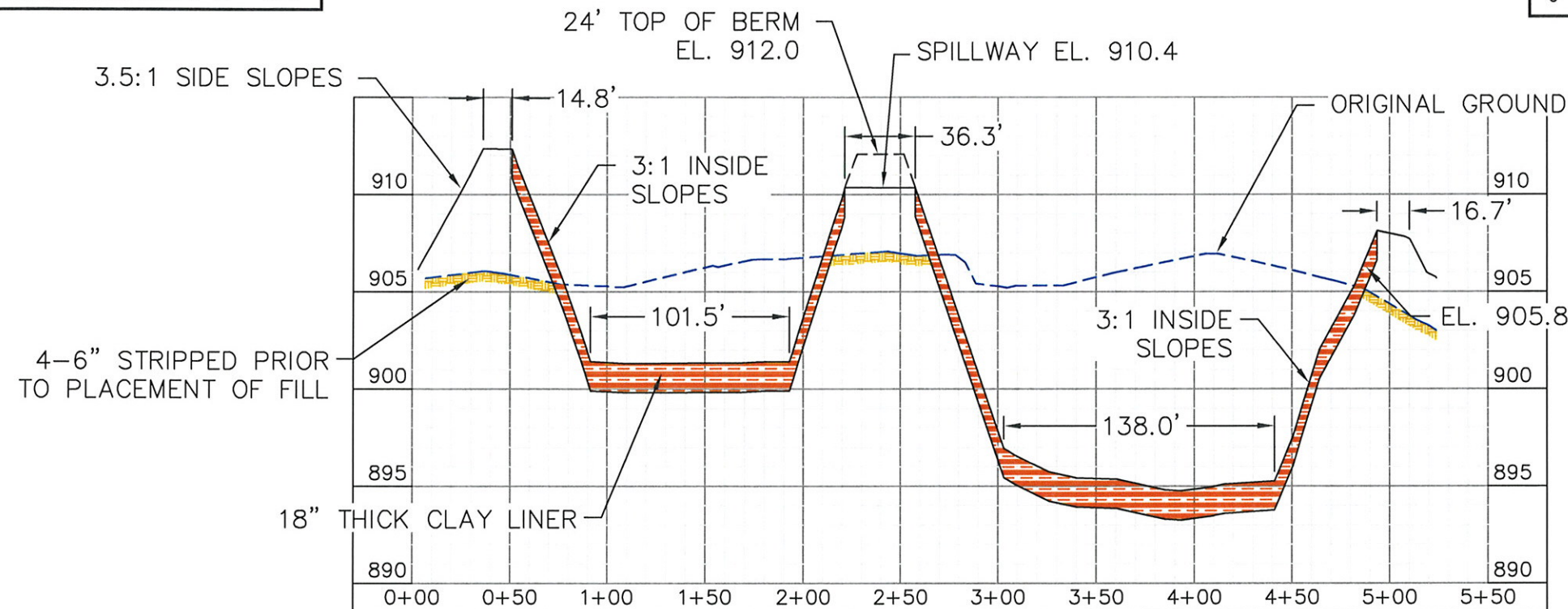
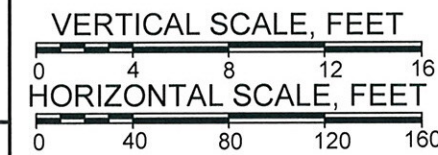
- GRAVEL
- FILL
- CONCRETE
- STRIPPING
- EXISTING GROUND



SCALE:
VERTICAL: 1"=8'
HORIZONTAL: 1"=80'

E-E
8

WASTE STORAGE POND 2 CROSS SECTION



F-F
8

WASTE STORAGE POND 1 & 2 CROSS SECTION

1	As Built	4/1/13
No.	Revision/Issue	Date

DeHaan, Grabs & Associates, LLC
Consulting Engineers
PO Box 522, Mandan, ND 58554
(701) 663-1116, FAX: (701) 667-1356
www.dgaengineering.com

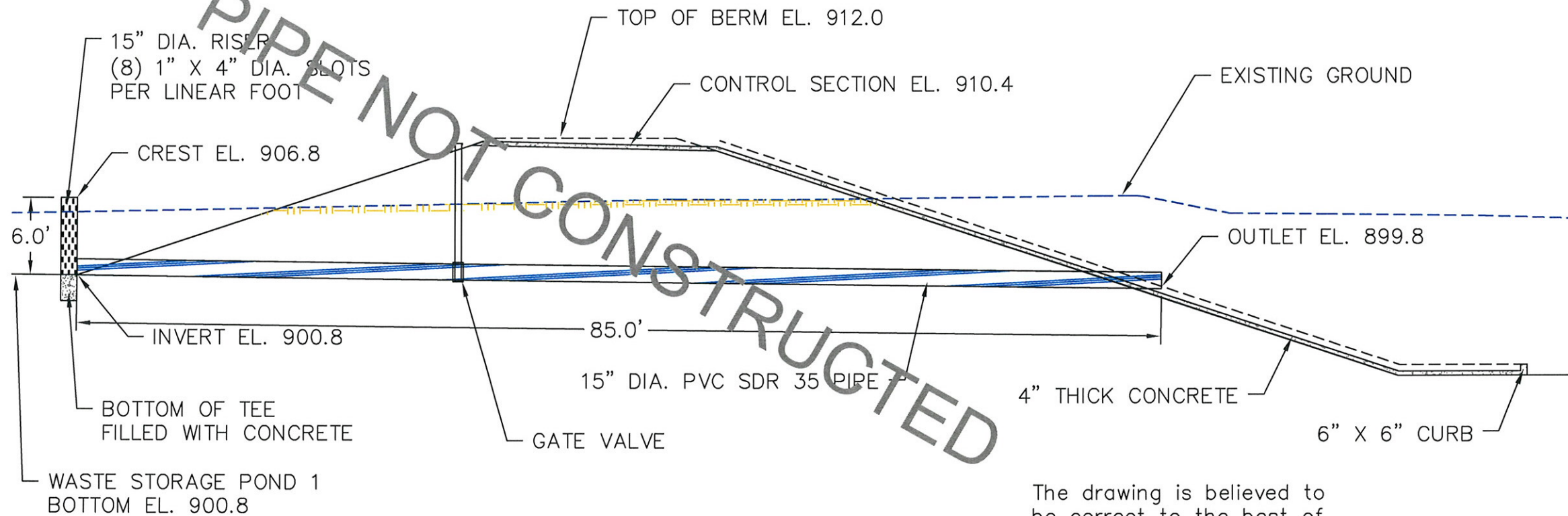
C & H HOG FARMS
GESTATION-FARROWING FARM

SECTION 26, T 15 N, R 20 W
NEWTON COUNTY, AR

WASTE STORAGE POND CROSS SECTIONS

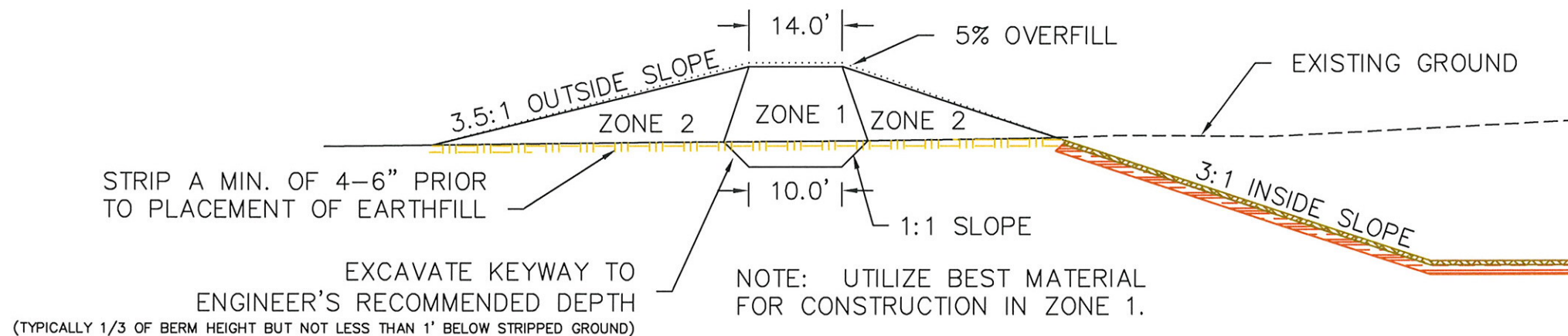
DATE: APR 30, 2012	SHEET:
SCALE: AS SHOWN	11
DRAWN BY: NAP	
CHECKED BY: DLD	

FILE NAME: OS PROJECT FILES/SWINE/HENSON/CFILES/PLAN



PIPE INLET DETAILS
SCALE: 1" = 10'

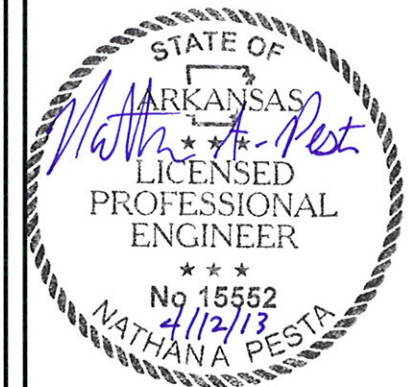
The drawing is believed to be correct to the best of the professional's knowledge but it cannot be guaranteed accurate.



TYPICAL HOLDING POND MAXIMUM BERM DETAIL
NOT TO SCALE

GENERAL NOTES

- GRAVEL
- FILL
- CONCRETE
- STRIPPING
- EXISTING GROUND



No.	Revision/Issue	Date

DeHaan, Grabs & Associates, LLC
Consulting Engineers
PO Box 522, Mandan, ND 58554
(701) 663-1116, FAX: (701) 667-1356
www.dgaengineering.com

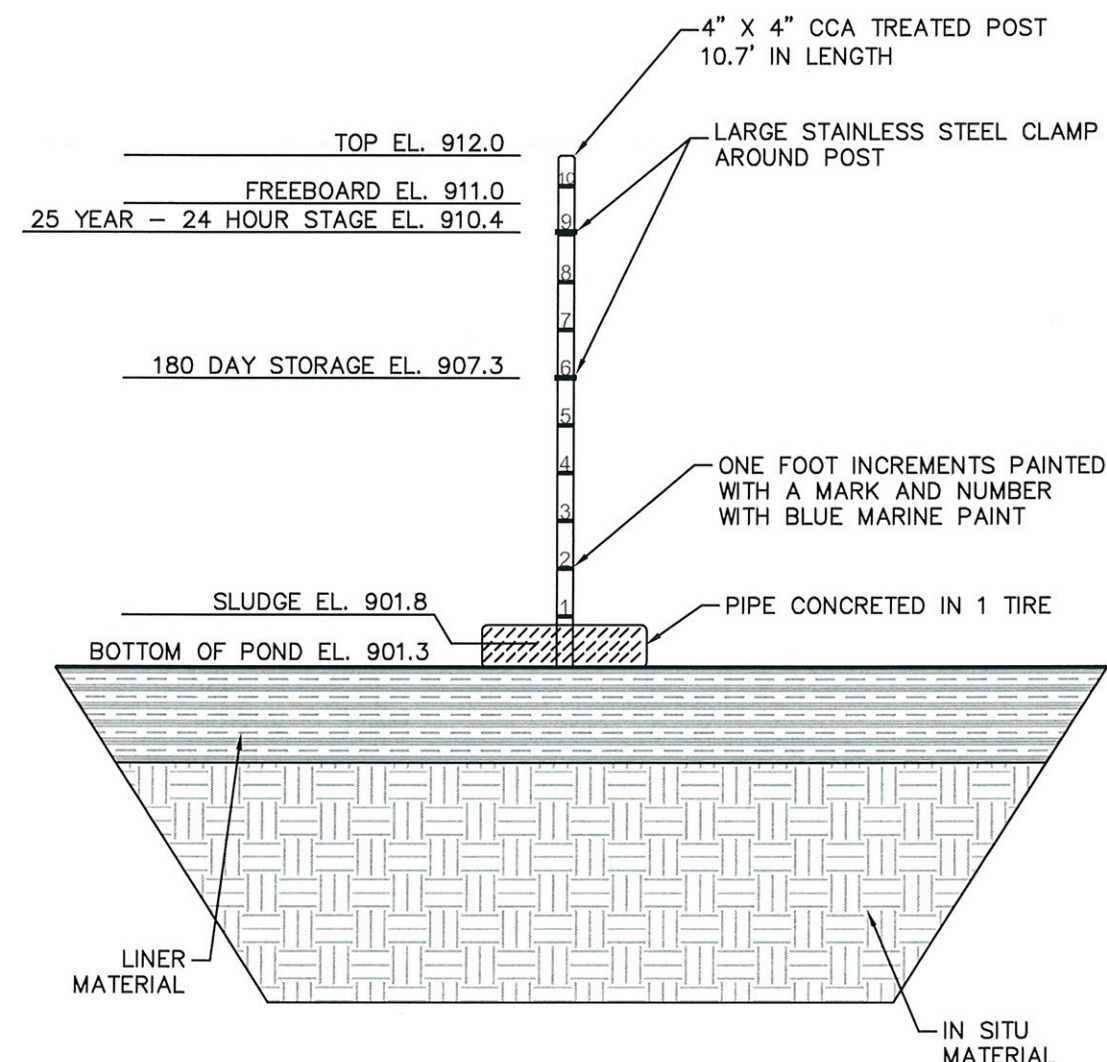
C & H HOG FARMS
GESTATION-FARROWING FARM

SECTION 26, T 15 N, R 20 W
NEWTON COUNTY, AR

POND INLET & MAXIMUM BERM DETAILS

DATE: APR 30, 2012	SHEET: 13
SCALE: AS SHOWN	
DRAWN BY: NAP	
CHECKED BY: DLD	

Waste Storage Pond 1 Stage Storage Table						
Elevation (ft)	Stage (ft)	Area (ft ²)	Volume (ft ³)	Cum. Volume (ft ³)	Cum. Volume (acre-feet)	
912.0	10.7	20,153	28,793	118,918		Top
911.0	9.7	17,130	19,227	100,065	2.3	Freeboard
910.4	9.1	15,838	16,603	90,125	2.1	25 Year-24 Hour Stage/Overflow El.
909.8	8.5	14,915	7,316	80,838	1.9	
909.3	8.0	14,349	6,946	73,522	1.7	
908.8	7.5	13,435	6,585	66,576	1.5	
908.3	7.0	12,905	6,235	59,991	1.4	
907.8	6.5	12,035	5,898	53,756	1.2	
907.3	6.0	11,557	5,570	47,858	1.1	180 Day Stage
906.8	5.5	10,723	5,253	42,288	1.0	
906.3	5.0	10,289	4,947	37,035	0.9	
905.8	4.5	9,499	4,648	32,088	0.7	
905.3	4.0	9,093	4,360	27,440	0.6	
904.8	3.5	8,347	4,079	23,080	0.5	
904.3	3.0	7,969	3,808	19,001	0.4	
903.8	2.5	7,263	3,524	15,193	0.3	
903.3	2.0	6,833	3,294	11,669	0.3	
902.8	1.5	6,343	3,060	8,375	0.2	
902.3	1.0	5,897	2,837	5,315	0.1	
901.8	0.5	5,451	2,478	2,478	0.1	Sludge El.
901.3	0.0	0	0	0	0.0	Bottom



WASTE STORAGE POND 1

GENERAL NOTES

- INSITU MATERIAL
- CLAY LINER

SCALE, FEET

0 2 4 6 8



No.	Revision/Issue	Date
1	As Built	4/1/13

DeHaan, Grabs & Associates, LLC
Consulting Engineers
PO Box 522, Mandan, ND 58554
(701) 663-1116, FAX: (701) 667-1356
www.dgaengineering.com

C & H HOG FARMS
GESTATION-FARROWING FARM

SECTION 26, T 15 N, R 20 W
NEWTON COUNTY, AR

WASTE STORAGE POND 1
STAGE STORAGE TABLE

DATE: MAY 30, 2012	14
SCALE: 1" = 4'	
DRAWN BY: CAS	
CHECKED BY: DLD	

From: [Hogan, Stephen](#)
To: [Deardoff, Amy](#)
Subject: FW: 2-2
Date: Friday, April 12, 2013 10:58:09 AM
Attachments: [20130412101532.pdf](#)

Amy,

Please add this to zylab and the web. Permit No. ARG590001.

Thanks,

Stephen

From: Nathan Pesta [mailto:Nathanpdga@btinet.net]
Sent: Friday, April 12, 2013 10:29 AM
To: Hogan, Stephen
Cc: 'Jason Henson'; 'Richard Gray'; 'Patrick Pollack'
Subject: 2-2

Nathan A.Pesta P.E.
Senior Project Engineer
DeHaan, Grabs and Associates, LLC
Bus 701-663-1116
Cell 701-400-3950
Fax 701-667-1356
www.dgaengineering.com